

PP-300

MC PHONO PICKUP CARTRIDGE

Phasemation

Owner's Manual

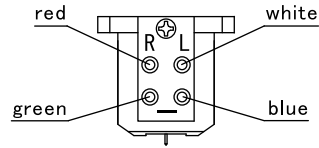
Thank you for purchasing Phasemation PP-300, MC phono pick up cartridge. Please read the following instructions carefully to follow the proper use of PP-300 before setting it up and to enjoy it for many years.

● Connection

Magnet poles of each terminal are shown on the right.

Properly connect them in accordance with the colors of the lead wires.

- The left upper terminal : Right channel Hot + (red)
- The right upper terminal : Left channel Hot + (white)
- The left lower terminal : Right channel Earth - (green)
- The right lower terminal : Left channel Earth - (blue)



● Installation

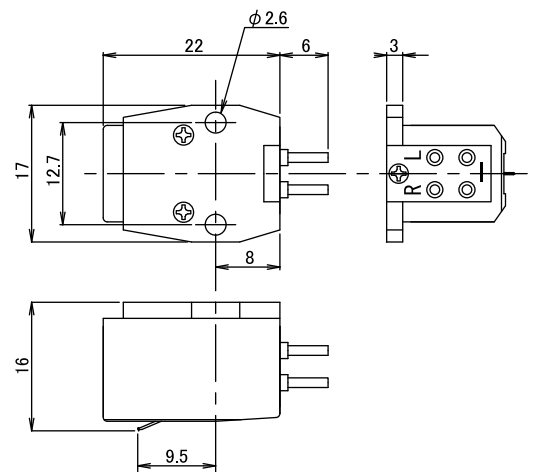
The mounting hole of this cartridge is a through-type and it may be pinched with the shell and the screw. The recommended length of the screw (M2.6mm, P0.45mm) is 10mm.

● Cautions

1. This cartridge PP-300 is a low-impedance-moving-coil type. Please use it with an MC low impedance step-up transformer or a head amplifier (MC input of PHONO) in order to connect it to a phono amplifier.
2. Please do not touch the coil and the wire when you clean the stylus chip with a brush. Be sure to avoid using cleaners such as alcohol solvents or it can cause trouble such as chip skipping.
3. Do not apply heat to the cartridge directly such as soldering a lead wire at the output terminal. It can cause trouble such as getting the wire broken.
4. Use at a temperature 20 to 26°C. This cartridge will hardly perform as well as when it was designed if it is used at a temperature out of the range. Before using this cartridge, please make sure to take enough warm-up time until the room temperature fits in the range especially in winter.
5. When you clean this cartridge, please use dry clean cloth. Be sure to avoid using a cleaner such as alcohol and thinner solvents.
6. The attached wrench and screw are made from steel. Be careful not to let it break or adhere to the magnetic circuits when assembling.

● Specifications

- | | |
|--|---|
| 1. Electric Generation | Moving coil |
| 2. Impedance | 4 ohm |
| 3. Appropriate Needle Pressure | 1.7 to 2.0 g |
| 4. Output Voltage | 0.28 mV or more (horizontally 1kHz 50 mm/s) |
| 5. Freq. Range at Play | 10 Hz to 30 kHz |
| 6. Compliance | 8.0x(e-6)cm/dyne (100Hz) |
| 7. Separation | 30dB or more (1kHz) |
| 8. Channel Balance | Within 1dB (1kHz) |
| 9. Applicable Temp. Range | 20 to 26°C |
| 10. Self weight | 11.1g |
| 11. Stylus Chip | Diamond (line contact/bending rate 0.03x0.003mm) |
| 12. Cantilever | Pure boron (Diameter 0.26mm) |
| 13. Magnet | Samarium-cobalt Magnet |
| 14. Magnetic Circuit Components Material | Pure Metal |
| 15. Material of Base/Body | Duralumin carved material (with DLC treatment)
/Duralumin carved material (with DLC treatment) |
| 16. Dimensions | See the figure |
| 17. Accessories | Hex wrench, Screw (M2.6x10) x2, Washer x2, Nut x2 |



Dimensions figure(mm)

■ Dimensions and specifications might be changed without notice for the improvement of products.

● Needle exchange

Please contact the dealer when exchanging the needle.

Phasemation

Kyodo Denshi Engineering Co., Ltd.

8-40-17 Shinyoshidagashi, Kohoku-ku, Yokohama, Kanagawa, 223-0058 Japan

TEL 81-45-710-0975

FAX 81-45-710-0976

URL <http://phasemation.com>

Phasemation is the original audio brand of Kyodo Denshi Engineering Co., Ltd.