

PP-1000

MC PHONO PICKUP CARTRIDGE

Phasemation

Owner's Manual

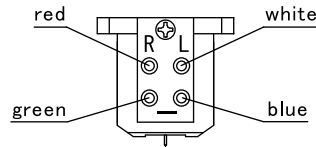
Thank you for purchasing Phasemation PP-1000, MC phono pick up cartridge. Please read the following instructions carefully to follow the proper use of PP-1000 before setting it up and to enjoy it for many years.

● Connection

Magnet poles of each terminal are shown on the right.

Properly connect them in accordance with the colors of the lead wires.

- The left upper terminal : Right channel Hot + (red)
- The right upper terminal : Left channel Hot + (white)
- The left lower terminal : Right channel Earth - (green)
- The right lower terminal : Left channel Earth - (blue)



● Installation

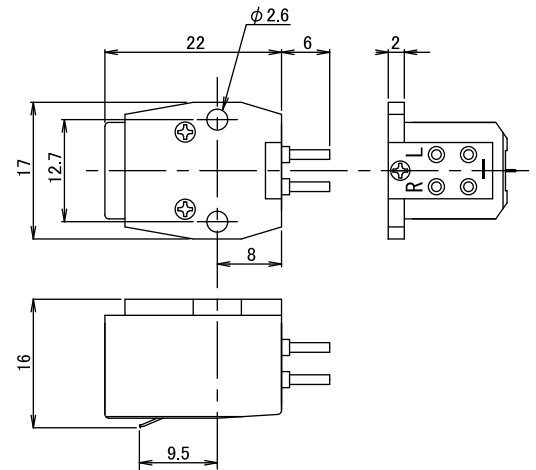
The mounting hole of this cartridge is a through-type and it may be pinched with the shell and the screw. The recommended length of the screw (M2.6mm, P0.45mm) is 10mm.

● Cautions

1. This cartridge PP-1000 is a low-impedance-moving-coil type. Please use it with an MC low impedance step-up transformer or a head amplifier (MC input of PHONO) in order to connect it to a phono amplifier.
2. Please do not touch the coil and the wire when you clean the stylus chip with a brush.
Be sure to avoid using cleaners such as alcohol solvents or it can cause trouble such as chip skipping.
3. Do not apply heat to the cartridge directly such as soldering a lead wire at the output terminal. It can cause trouble such as getting the wire broken.
4. Use at a temperature 20 to 26°C. This cartridge will hardly perform as well as when it was designed if it is used at a temperature out of the range.
Before using this cartridge, please make sure to take enough warm-up time until the room temperature fits in the range especially in winter.
5. When you clean this cartridge, please use dry clean cloth. Be sure to avoid using a cleaner such as alcohol and thinner solvents.

● Specifications

- | | |
|--|---|
| 1. Electric Generation | Moving coil |
| 2. Impedance | 4 ohm |
| 3. Appropriate Needle Pressure | 1.7 to 2.0 g |
| 4. Output Voltage | 0.29 mV or more (horizontally 1kHz 50 mm/s) |
| 5. Freq. Range at Play | 10 Hz to 30 kHz |
| 6. Compliance | 8.0x(e-6)cm/dyne (100Hz) |
| 7. Separation | 30dB or more (1kHz) |
| 8. Channel Balance | Within 1dB (1kHz) |
| 9. Applicable Temp. Range | 20 to 26°C |
| 10. Self weight | 14.3g |
| 11. Stylus Chip | Diamond (line contact/bending rate 0.03x0.003mm) |
| 12. Cantilever | Pure boron (Diameter 0.26mm) |
| 13. Magnet | Samalium-cobalt Magnet |
| 14. Magnetic Circuit Components Material | Purmendur |
| 15. Material of Base/Body | Stainless carved material (with DLC treatment)
/Duralumin carved material (with DLC treatment) |
| 16. Dimensions | See the figure |
| 17. Accessories | Hex wrench, Screw (M2.6x10)x2, Washer x2, Nut x2 |



Dimensions figure(mm)

■ Dimensions and specifications might be changed without notice for the improvement of products.

● Needle exchange

Please contact the dealer when exchanging the needle.

Phasemation

Kyodo Denshi Engineering Co., Ltd.

8-40-17 Shinyoshidahigashi, Kohoku-ku, Yokohama, Kanagawa, 223-0058 Japan

TEL 81-45-710-0975

FAX 81-45-710-0976

URL <http://phasemation.com>

Phasemation is the original audio brand of Kyodo Denshi Engineering Co., Ltd.